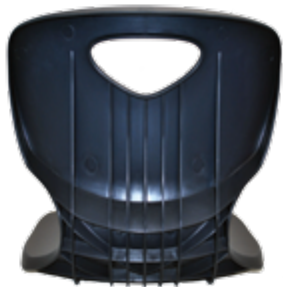




Glide View



Ribbed Reinforced Shell Back for Added Strength



Shell Colors

## EVEREST SERIES

### 4-Leg Café Chair

#### Frame:

Café chair frame is formed with 1" diameter, 16 gauge steel. Cross bars are .5" diameter, 18 gauge steel. Frame is 26" tall. All units are welded together with two seat brackets of 16 gauge die-formed steel, integrally tying all tube parts for maximum structural integrity.

#### Standard Chrome Finish:

Chrome is comprised of metal layers (Nickel & Chromium) electrostatically bonded to metal.

#### Glide System:

Features a glide attachment with a standard internal gripping spring to fit the 1" outside diameter tubing. The glide has a ferrule glide casing constructed of durable case hardened steel. No plastic. The glide is a full swivel design, silent and firm fitting for positive attachment and retention. All glides make full level contact with the floor. The glide base is made from nylon material to protect and easily slide over virtually all flooring surfaces.

#### Shell:

One-piece shell is injection molded from special high impact, blush resistant polypropylene plastic. Textured surface is etched to provide a non-slip surface while assisting in maintaining like-new appearance. The underside of the shell is molded with an advanced rib pattern transferring weight directly to the frame. The shell is attached to frame with four machine rivets.

#### Shell Colors:

Available in standard Black, Navy and Burgundy.  
Special order: Hunter Green, Red, Orange, Purple and Yellow.

*(This product meets the applicable requirements ANSI/BIFMA X6.1-2012 Educational Seating – Tests.)*

Description	Unit of Measure	Std Pack Count	Weight (lb.)	Width (in.)	Length (in.)	Height (in.)	Material	Surface Treatment
High Chair 28" Frame	EACH	1	8.712	19.469	21.52	25.917	Frame: $\Phi$ 0.985; 16GA Steel Cross Bar: $\Phi$ 0.5; 18GA Steel Bracket: 16GA Steel	Chrome